

# YOUR RELIABLE INDOOR GROW PARTNER

Our Social Media



Contact:

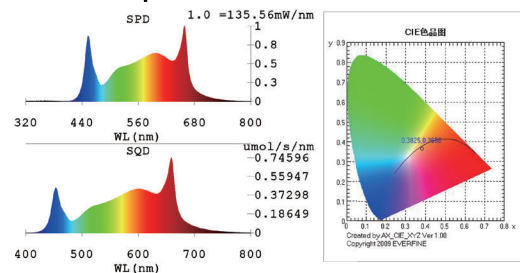
Tel: +1 8409776768

Email: support@spider-farmer.com

info@spider-farmer.com

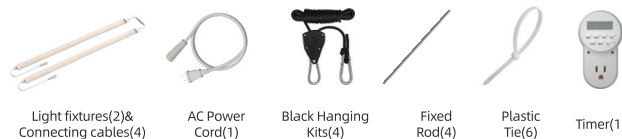
## SPECIFICATIONS

### Spectrum Test Report

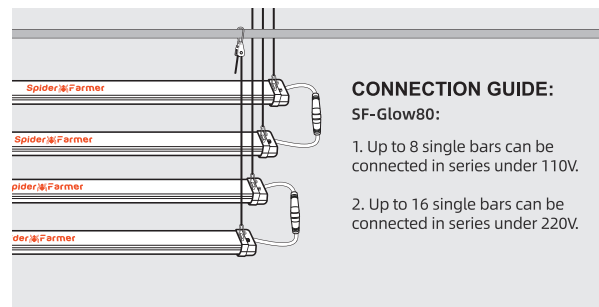
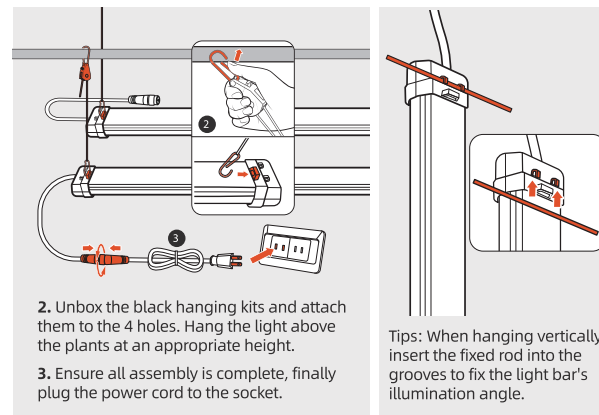
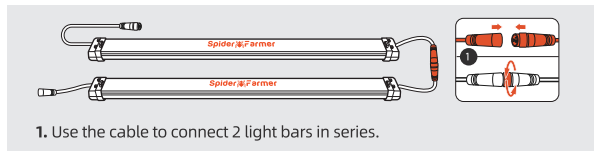


Model	SF-Glow80
Spectrum	660-665nm, 2800-3000k, 4800-5000k
Diode Amount	238*2= 476PCS
Input Voltage	AC100-277V
Amp	0.3308A@AC120V 0.1681A@AC240V 0.1484A@AC277V
Frequency	50/60HZ
Single Bar Size	43.3*1.77*1.45IN/110*4.5*3.7CM
Single Bar Wattage	40W ± 5%
Net Weight	3lb/1.4KG
Package Weight	5.4lb/2.5KG
Lifespan	50,000Hours
Warranty	5 Year Limited Warranty

### PACKAGE CONTENTS



## INSTALLATION



Spider Farmer

# USER MANUAL SF-Glow80

Everything Your Vegetables Need



SF-Glow80-02

## APPLICATIONS

The Spider Farmer Glow80 is the perfect partner for the Spider Farmer Plant Stand.



## SAFETY INSTRUCTIONS FOR USE

1. The light belongs to class I protection equipment; it must be properly grounded.
2. The power supply should be connected by qualified professionals.
3. Before use, ensure that the voltage used is not higher or lower than the specified value in the operation manual.
4. For daisy chain operations, the total power cannot exceed your timers rated capacity.
5. Do not touch the product while it is in operation.
6. Do not look directly into the lights without wearing protective glasses.
7. To disconnect the power cord, only pull on the plug; do not use excessive force on the cable itself.
8. Exercise caution and adhere to electrical safety guidelines during installation. Avoid touching exposed wires to prevent the risk of fatal electric shock.
9. Unplug the power cable during storms and rainy weather to mitigate the risk of lightning strikes.
10. Always unplug the light before cleaning and performing repairs.
11. Do not disassemble, repair or modify the light without the authorization of the manufacturer unless performed by qualified professionals.
12. The maximum operating temperature is 40 C. Do not operate the light above this temperature.
13. Do not connect the light to other dimming devices without authorization.

## GENERAL CARE

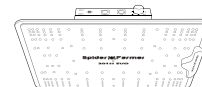
SPIDER FARMER Grow Lights are passively cooled with zero moving components. They are designed for harsh environments and years of maintenance-free performance. Some basic care will keep your lights working at peak performance cycle-after-cycle.

- Natural convection dissipates heat away from the heat sink. In order to facilitate proper cooling, maintain at least a one-inch gap between the fixture and the roof of your grow area. Failure to do so may reduce the fixture's lifespan.
- To achieve the optimal lifespan and performance of your fixtures, routinely check for and remove excess dust, debris, and mineral build up from the heat sink and LED array. Cleaning should always be done with the fixture unplugged and we recommend using low-pressure compressed air to clean effectively and safely.
- Never use a cloth to clean the diode array, as it may scratch or damage the integrity of the silicon seal, or even dislodge diodes entirely.
- To minimize degradation, avoid touching the diodes with your hands, even while the fixture is powered off.

## OTHER CATEGORIES

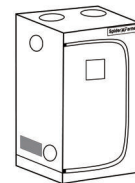
### Led Grow Lights

Spider Farmer Led Grow Lights utilize Samsung LM301 H EVO high-efficiency diodes to provide powerful and uniform light output for optimal crown penetration and the highest possible yield. Each light comes equipped with a dimming box, allowing for adjustable light intensity and the ability to connect multiple lights for uniform light distribution.



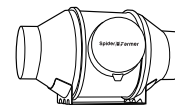
### Grow Tents

Spider Farmer grow tents are designed to create ideal growing conditions for indoor plant cultivation. By adopting a unique 1680D Oxford canvas and Diamond reflective Mylar, Spider Farmer grow tents effectively maximize light reflectivity and prevent light leaks. The metal frame is made from hardened steel, and our tents are three times thicker and denser than ordinary tents. With a stable metal angle adapter and a load capacity of up to 140 lbs.



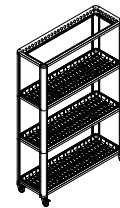
### Inline Fan

Utilizing a mixed flow design combined with an EC motor to ensure true energy efficiency with a very low noise level. Lightweight ABS blades reduce the airflow resistance and increase airflow by 40%. The smart controller has multiple modes for operation, 10 speeds, is easy to program and can control the humidity and temperature automatically.



### Plant Stand

This stand is made of high-grade iron with a moisture-resistant powder coating, ensuring its durability. The weight and durability make it a testament to exceptional quality. Textured and leak-proof trays provide a secure and hygienic environment for your plants. Installation takes under 20 minutes, and the stand has four removable wheels for effortless movement. We recommend using it with SF-Glow80 or SF600 LED Grow Light.



# WHY CHOOSE SPIDER FARMER?



#### Shipping:

- A. Global Delivery Available: We deliver worldwide
- B. Multiple Warehouses: with warehouses in the USA, CA, AU, UK, EU, RU, and TH, we can offer fast delivery within 24 hours



#### Customer Service :

- A. Local Repair Centers: We have repair centers in the USA, CA, AU, UK, EU, and RU for your convenience
- B. 5-Year Warranty
- C. Dedicated Customer Service: our friendly and professional customer service department is always ready to assist you



#### Support:

- Professional Technical Support: We have a team of experts available to assist you with any technical issues



#### Bulk Price Discounts

- Discounts for Large Orders: The more you order, the cheaper the price